

ANA Group at a Glance

Outline of Business

The ANA Group consists of All Nippon Airways Co., Ltd. (ANA), 114 subsidiaries and 42 affiliated companies*. The Group's business is based on air transportation, along with travel services and other operations.

*as of June 2007



Air Transportation

ANA and its six air transportation operators provide passenger, cargo, and mail transportation services. According to IATA (International Air Transport Association) passenger transport statistics, the ANA Group ranks eighth among the world's airlines.



• Domestic Passenger Operations

With 938 flights each day on 130 routes—representing some 46.47 million passengers a year—the ANA Group enjoys a leading market share of 48.4%. With the keywords “simple” and “convenient,” we are working to improve all aspects of customer service.



• International Passenger Operations

The ANA Group operates 596 flights a week on 38 routes and carries 4.55 million passengers a year from Japan to cities around the world. As a major member of Star Alliance, the world's largest airline alliance, the ANA Group provides high-quality international air transportation.



• Cargo and Mail Operations

The ANA Group uses four cargo freighters along with available cargo space on passenger aircraft. We operate eight domestic cargo flights daily on five routes, and 108 international freighters a week on 20 routes. Efforts to enhance this core business are ongoing, including the acquisition of new freighters.



• Other Air Transportation Operations

Along with air transportation operations, the ANA Group provides customer services, aircraft maintenance and airport handling. These operations are also offered to airlines outside the ANA Group.



Travel Services

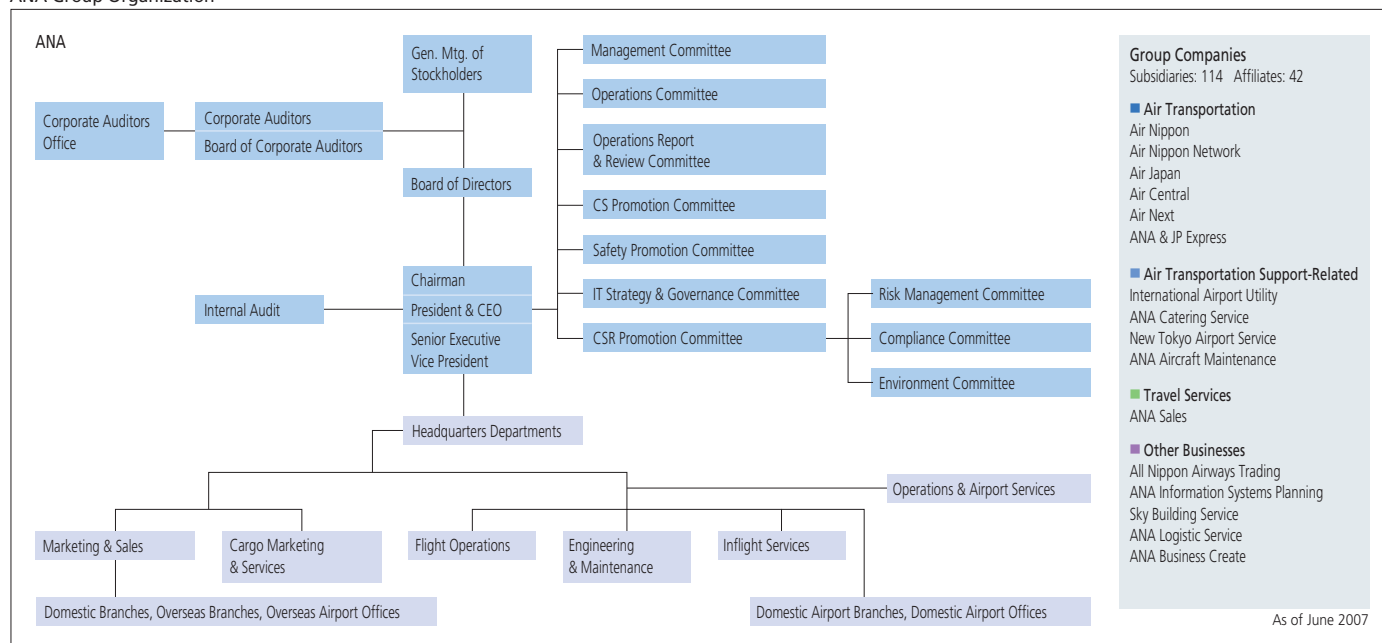
With ANA Sales Co., Ltd., as its driving force, the Group markets a wide range of travel products catering to both individuals and groups, as well as installment savings plans for future travel. The principal activities are the sales of ANA flight tickets and the planning and sales of ANA Hallo Tour and ANA Sky Holiday travel packages making use of ANA's network.



Other Businesses

The Group's other businesses are principally in the areas of information and telecommunications (development and sales of airline-related information terminals and software), logistics (management of cargo storage and deliveries) and trade (import/export of aircraft-related materials, as well as retail at airports and mail-order sales).

ANA Group Organization

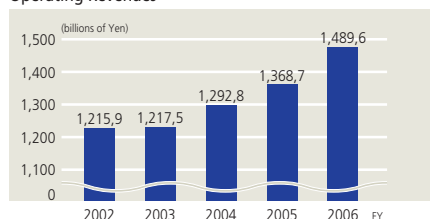


Various Data

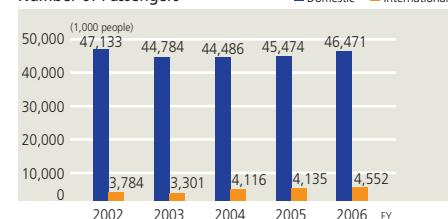
Corporate Outline

Company name	All Nippon Airways Co., Ltd.
President	Mineo Yamamoto
Date of establishment	December 27, 1952
Address	Shiodome City Center, 1-5-2 Higashi-Shimbashi, Minato-ku, Tokyo 105-7133, Japan
Website URL	http://www.ana.skyweb.com
Paid-in capital	¥160.001 billion
Number of employees	32,460 (ANA Group)

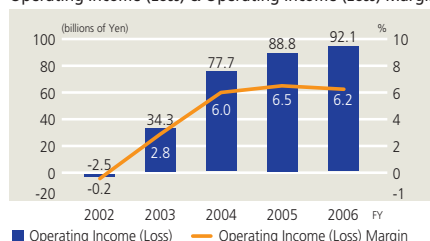
Operating Revenues



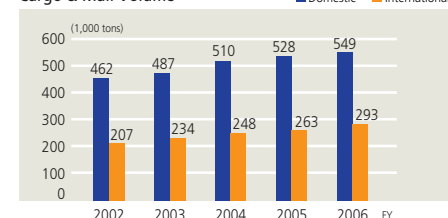
Number of Passengers



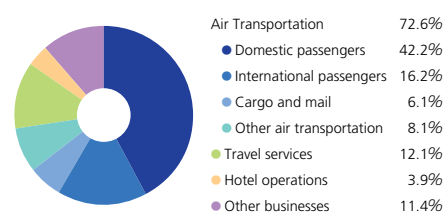
Operating Income (Loss) & Operating Income (Loss) Margin



Cargo & Mail Volume

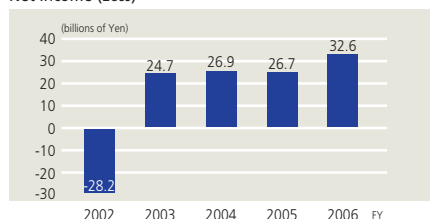


Segment Revenues / Percentage of Total Operating Revenue

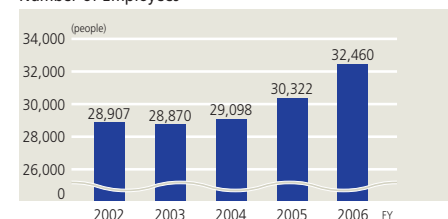


*Hotel operations were sold in June 2007.

Net Income (Loss)



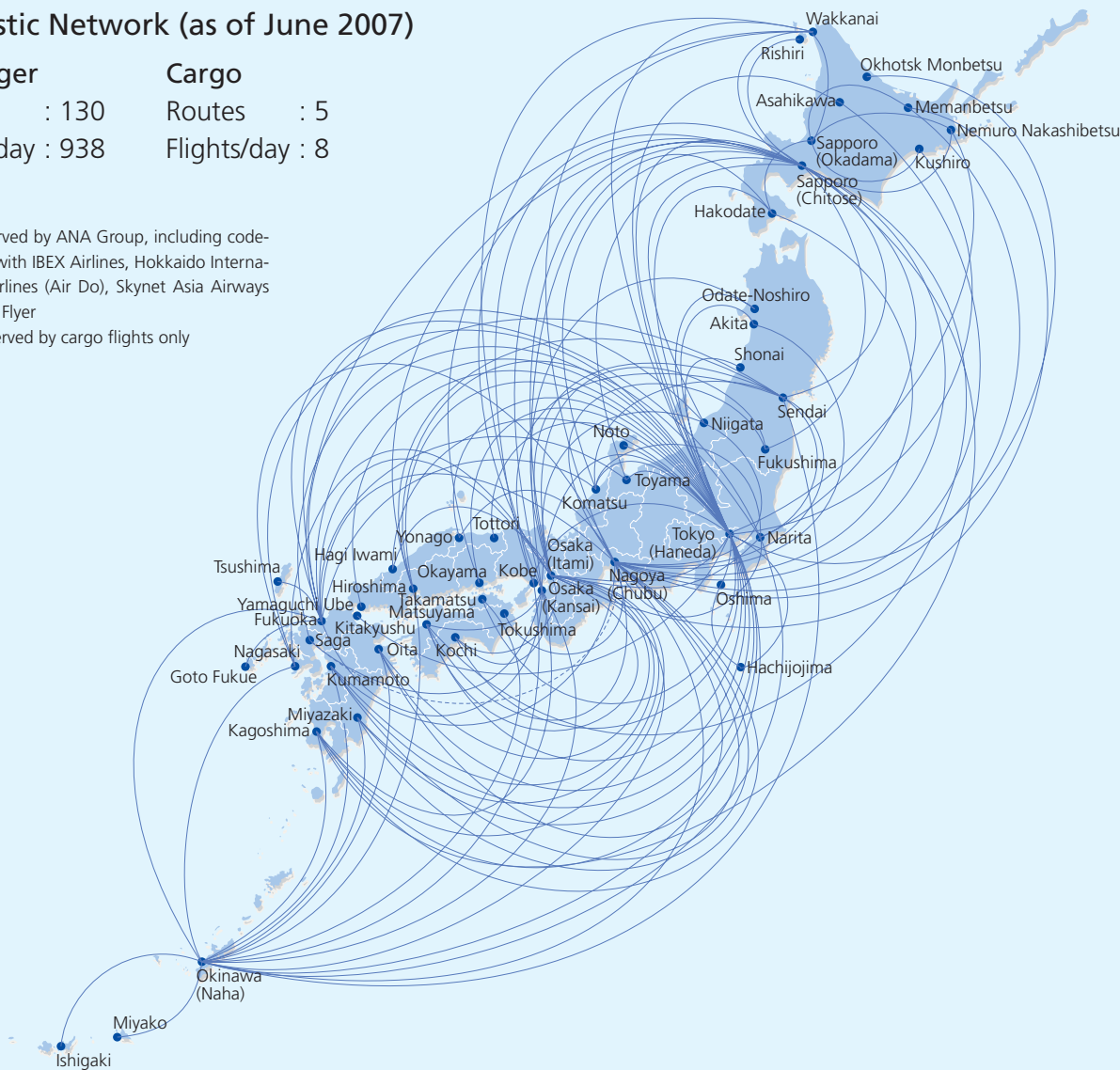
Number of Employees



Domestic Network (as of June 2007)

Passenger	Cargo
Routes : 130	Routes : 5
Flights/day : 938	Flights/day : 8

- Cities served by ANA Group, including code-sharing with IBEX Airlines, Hokkaido International Airlines (Air Do), Skynet Asia Airways and Star Flyer
- routes served by cargo flights only



Fleet: 12 types / 210 aircraft

(as of March 2007)

1	2	3
4	5	6

7	8	9
10	11	12

1. Boeing 747-400	23
2. Boeing 777-300	15
3. Boeing 777-200	23
4. Boeing 767-300	56
5. Boeing 737-700	10
6. Boeing 737-500	25
7. Airbus A321-100	3
8. Airbus A320-200	29
9. Bombardier DHC-8-400	14
10. Bombardier DHC-8-300	5
11. Fokker F-50	3
12. Boeing 767-300 (freighter)	4



International Network (as of June 2007)

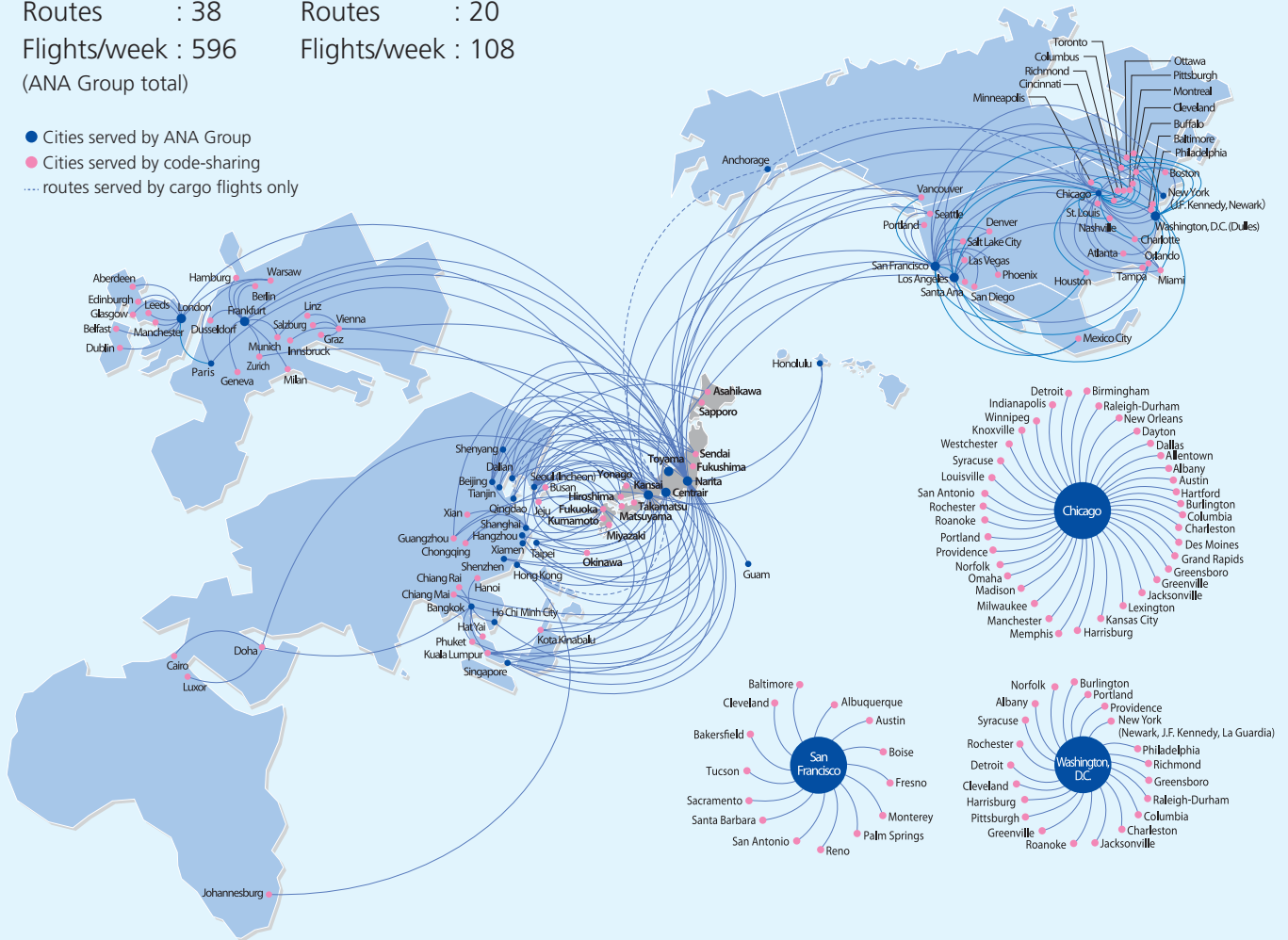
Passenger

Routes : 38
Flights/week : 596
(ANA Group total)

Cargo

Routes : 20
Flights/week : 108

- Cities served by ANA Group
- Cities served by code-sharing
- routes served by cargo flights only



Boeing 787, scheduled for debut in 2008 (generated image)

© Boeing