

Management Members and Group Organization

(As of June 23, 2008)



Front row, from left, K. Kubo, Y. Ohashi, M. Yamamoto, and S. Ito
Back row, from left, A. Nomoto, M. Kimura, T. Hidema, S. Inoue, S. Nagase, O. Shinobe, J. Yamauchi, K. Nakamura, M. Morimoto, S. Takemura, K. Okada, S. Mori, and H. Hora

Board of Directors

Yoji Ohashi

Chairman of the Board

1993: Executive Vice President
2001: President & Chief Executive Officer
2005: Chairman of the Board
2007: Chairman of the Board

Mineo Yamamoto

*President & Chief Executive Officer,
Chairman of Group Strategy Committee,
Head of Safety Promotion Committee
and CSR Promotion Committee*

1999: Director and General Manager, Office of the President
2005: President & Chief Executive Officer

Koshichiro Kubo

*Senior Executive Vice President,
Executive Office, Personnel, ANA JINZAI University,
Employee Relations, Business Support*

2003: Executive Vice President
2007: Senior Executive Vice President

Shinichiro Ito

*Senior Executive Vice President,
Marketing & Sales, CS Promotion,
Products & Services Strategy,
Chairman of CS Promotion Committee*

2003: Executive Vice President
2007: Senior Executive Vice President

Shin Nagase

*Executive Vice President,
General Administration, Public Relations, CSR Promotion,
Chairman of CSR Promotion Committee,
Environment Committee,
Risk Management Committee and Compliance Committee*

2001: Senior Vice President
2004: Executive Vice President

Mitsuo Morimoto

*Executive Vice President,
Operations & Airport Services, Corporate Safety and Audit,
Chairman of Safety Promotion Committee*

2004: Senior Vice President
2005: Executive Vice President

Tomohiro Hidema

*Executive Vice President,
Investor Relations, Group Business Development,
Finance & Accounting, Purchasing*

2003: Senior Vice President
2004: Executive Vice President

Keisuke Okada

*Executive Vice President,
Alliance & International Affairs,
Information Technology Services,
Chairman of Information Technology Strategy*

2003: Senior Vice President
2004: Executive Vice President

Akinori Nomoto

*Executive Vice President,
Cargo Marketing & Services*

2001: Senior Vice President
2005: Executive Vice President

Hayao Hora

*Executive Vice President,
International & Regulatory Affairs, Facilities*

1971: Joined Ministry of Land, Infrastructure,
Transport and Tourism
2003: Road Transport Bureau, Vice-Minister for Transport
2007: Full-time Advisor
2008: Executive Vice President

Junko Yamauchi

*Executive Vice President,
Inflight Services*

2004: Senior Vice President
2007: Executive Vice President

Osamu Shinobe

*Executive Vice President,
Engineering & Maintenance*

2004: Senior Vice President

2007: Executive Vice President

Katsumi Nakamura

*Executive Vice President,
Operations & Airport Services,
Chairman of Operations Committee*

2005: Senior Vice President
2007: Executive Vice President

Shinichi Inoue

*Executive Vice President,
Flight Operations*

2005: Senior Vice President
2008: Executive Vice President

Shigeyuki Takemura

*Executive Vice President,
Corporate Planning, Corporate Affairs-Asia,
Government & Industrial Affairs,
B787 Launch Project*

2005: Senior Vice President
2008: Executive Vice President

Misao Kimura

*External Director,
Chairman of Nagoya Railroad Co., Ltd.*

2004: External Director

Shosuke Mori

*External Director,
President and Director of
The Kansai Electric Power Co., Inc.*

2006: External Director

Corporate Auditors

Kunitaka Kajita
External Corporate Auditor

Koji Ohno
Corporate Auditor

Hiroyuki Ito
Corporate Auditor

Shingo Matsuo
External Corporate Auditor,
Chairman, Kyushu Electric
Power Co., Inc.

Hideo Minamiyama
External Corporate Auditor,
Senior Advisor, Hokkaido Electric
Power Co., Inc.

Corporate Executive Officers

Minoru Aimono
Senior Vice President,
Marketing & Sales,
President of ANA Sales Co., Ltd.

Toru Sato
Senior Vice President,
Information Technology
Services

Ken Nishimura
Senior Vice President,
General Manager,
Osaka Sales Office

Nobuyuki Sato
Senior Vice President,
General Manager, China

Katsuyori Kikuchi
Senior Vice President,
General Manager,
Tokyo Sales Office

Yoshinori Maruyama
Senior Vice President,
Marketing & Sales

Katsumi Kobayashi
Senior Vice President,
General Manager, Narita Airport

Koichi Uchizono
Senior Vice President,
General Manager, Osaka Airport

Shinsuke Maki
Senior Vice President,
Engineering & Maintenance

Kiyoshi Tonomoto
Senior Vice President,
Cargo Marketing & Services

Shinya Katanozaka
Senior Vice President,
Personnel,
President, ANA JINZAI
University

Hideo Yaguchi
Senior Vice President,
General Manager, Tokyo Airport

Osamu Asakawa
Senior Vice President,
President of Air Nippon Co., Ltd.

Motomu Iwaya
Senior Vice President,
Operations & Airport Services

Akira Okada
Senior Vice President,
Corporate Planning

Akihiko Nakamura
Senior Vice President,
General Manager,
Fukuoka Sales Office

Yasuo Goto
Senior Vice President,
CSR Promotion

Toshifumi Oshida
Senior Vice President,
Flight Operations

Tsukasa Shibata
Senior Vice President,
General Manager,
Nagoya Sales Office

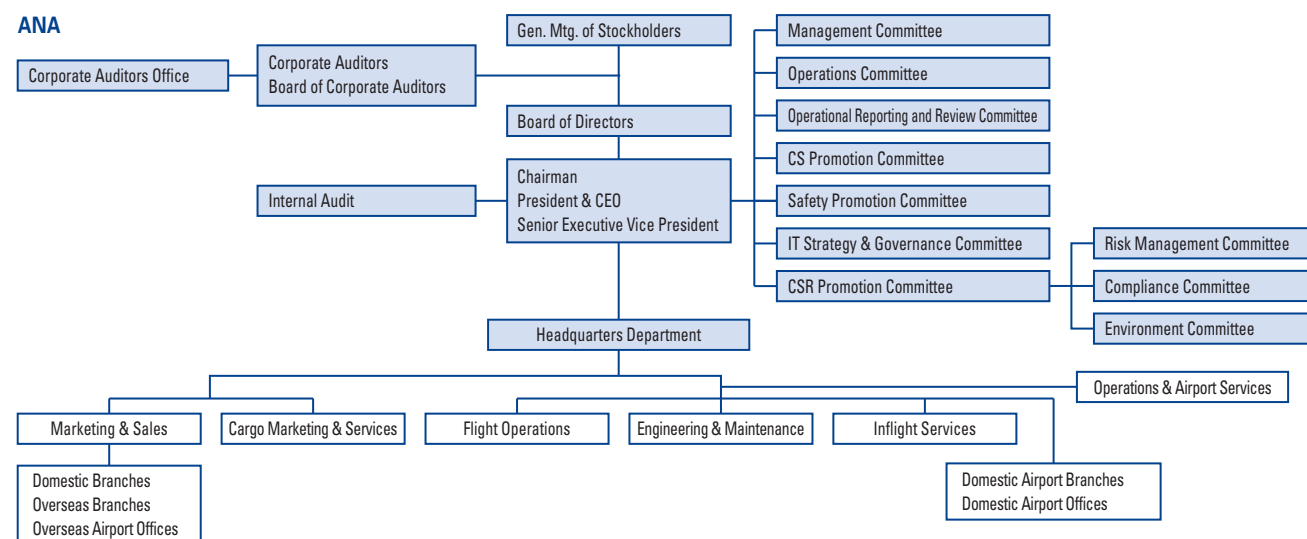
Eiji Kanazawa
Senior Vice President,
Finance & Accounting

Shunichi Kobayashi
Senior Vice President,
Flight Operations

Akihiko Hasegawa
Senior Vice President,
Engineering & Maintenance

Takashi Shiki
Senior Vice President,
General Manager,
Sapporo Sales Office

ANA Group Organization



ANA GROUP

Subsidiaries: 112
Affiliates: 40

Air Transportation: Transportation Related

Air Nippon Co., Ltd.
Air Nippon Network Co., Ltd.
Air Japan Co., Ltd.
Air Central Co., Ltd.
Air Next Co., Ltd.
ANA&JP Express Co., Ltd.

Air Transportation: Transportation Support Related

International Airport Utility Co., Ltd.
ANA Catering Service Co., Ltd.
New Tokyo Airport Service Co., Ltd.
ANA Aircraft Maintenance Co., Ltd.

Travel Services

ANA Sales Co., Ltd.
ANA Sales Americas

Other Businesses

All Nippon Airways Trading Co., Ltd.
ANA Information Systems Planning Co., Ltd.
Sky Building Service Co., Ltd.
ANA Logistic Service Co., Ltd.
ANA Business Create Co., Ltd.

Note: ANA transferred its hotel business outside the Group in June 2007.

(As of March 31, 2008)