

Investor Information

(As of March 31, 2009)

Trade Name

All Nippon Airways Co., Ltd.

Date of Foundation

December 27, 1952

Head Office

Shiodome City Center, 1-5-2 Higashi-Shimbashi,
Minato-ku, Tokyo 105-7133, Japan
TEL: 81-3-6735-1000
FAX: 81-3-6735-1005
URL: <http://www.ana.co.jp/eng/index.html>

Offices

Japan

Sapporo, Tokyo, Nagoya, Osaka, Fukuoka, Okinawa,
and 38 offices in other cities

United States

Los Angeles, New York, Washington, D.C., Chicago,
San Francisco, Honolulu, Guam

Europe

London, Paris, Frankfurt, Dusseldorf, Hamburg, Zurich, Geneva,
Brussels, Moscow, Rome, Madrid

Asia

Beijing, Tianjin, Shenyang, Dalian, Qingdao, Shanghai, Xiamen,
Hangzhou, Guangzhou, Hong Kong, Taipei, Seoul, Bangkok,
Ho Chi Minh City, Yangon, Kuala Lumpur, Singapore, Mumbai

Number of Employees

33,045 (Consolidated)

Paid-in Capital

¥160,001 million

Fiscal Year-End

March 31

Number of Shares of Common Stock

Authorized: 3,900,000,000 shares

Issued: 1,949,959,257 shares

Number of Shareholders

289,917

Stock Listings

Tokyo, Osaka and London

Ticker Code

9202

Major Shareholders

	Number of shares held (Thousands)	Percentage of total shares in issue
Japan Trustee Service Bank, Ltd. (trust account 4G)	99,593	5.11%
Nagoya Railroad Co., Ltd.	71,982	3.69
Japan Trustee Service Bank, Ltd. (trust account)	49,182	2.52
Tokio Marine & Nichido Fire Insurance Co., Ltd.	40,397	2.07
The Master Trust Bank of Japan, Ltd. (trust account)	36,636	1.88
Mitsui Sumitomo Insurance Co., Ltd.	34,770	1.78
All Nippon Airways Co., Ltd. Employee Stock Ownership Association	30,705	1.57
Nippon Life Insurance Company	30,681	1.57
Sumitomo Mitsui Banking Corporation	26,820	1.38
Mizuho Corporate Bank, Ltd.	26,753	1.37
Total	447,519	22.94%

Contact:

Investor Relations

All Nippon Airways Co., Ltd.

Shiodome City Center, 1-5-2 Higashi-Shimbashi,
Minato-ku, Tokyo 105-7133, Japan
TEL: 81-3-6735-1030 FAX: 81-3-6735-1185

Administrator of Register of Shareholders

The Sumitomo Trust and Banking Co., Ltd.

(Stock Transfer Agency Department)

3-1, Yaesu 2-chome, Chuo-ku, Tokyo

Independent Auditors

Ernst & Young ShinNihon LLC

American Depositary Receipts

Ratio (ADR:ORD): 1:2

Exchange: OTC (Over-the-Counter)

Symbol: ALNPY

CUSIP: 016630303

Depository:

The Bank of New York Mellon

101 Barclay Street, 22 West, New York, NY 10286, U.S.A.

TEL: 1-201-680-6825

U.S. Toll Free: 1-888-269-2377 (888-BNY-ADRS)

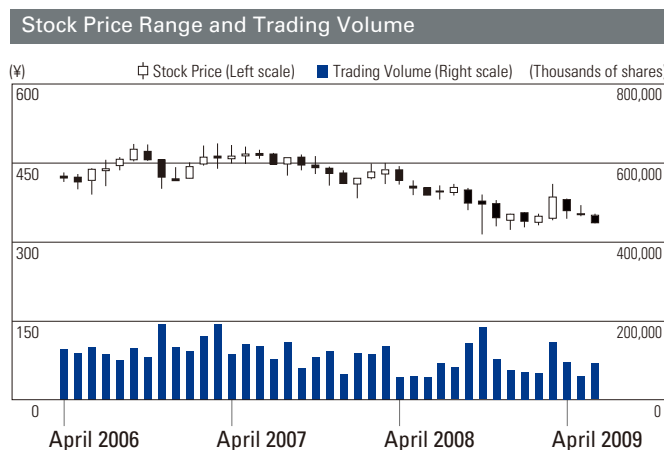
URL: <http://www.adrbnymellon.com>

Stock Price and Ratios (Consolidated)

	2009	2008	2007	2006	2005
Stock Price* (¥):					
High	446	486	489	509	403
Low	316	385	392	321	312
PER (times):					
High	—	14.8	29.2	32.5	23.3
Low	—	11.7	23.4	20.5	18.1
Price / Cash Flow Ratio (times):					
High	8.0	5.2	7.9	8.9	6.8
Low	5.7	4.2	6.3	5.6	5.3
PBR (times):					
High	2.7	2.1	2.4	2.9	3.1
Low	1.9	1.7	1.9	1.8	2.4
Net Income per Share (¥).....	(2.19)	32.93	16.77	15.64	17.26
Equity per Share (¥)	166.50	232.58	204.42	177.89	128.31
Cash Dividends per Share (¥).....	1.00	5.00	3.00	3.00	3.00

* Tokyo Stock Exchange

Stock Price



Composition of Shareholders (by number of shares)

