

Investor Information

(As of March 31, 2000)

Date of Foundation

December 27, 1952

Head Office

3-5-10, Haneda Airport,
Ota-ku, Tokyo 144-0041, Japan
TEL: 81-3-5756-5665
FAX: 81-3-5756-5659
URL: <http://www.ana.co.jp/>

Number of Employees

14,919 (Nonconsolidated)

Paid-in Capital

¥72,142,799,354

Number of Shares of Common Stock

Authorized: 2,203,200,000 shares

Issued: 1,442,725,111 shares

Number of Shareholders

162,878

Stock Listings

Tokyo, Osaka, London, and Frankfurt

Major Shareholders

	Number of shares held (Thousands)	Percentage of total shares in issue
Nagoya Railroad Co., Ltd.*	100,590	6.97%
Kyoei Life Insurance Co., Ltd.	32,854	2.28
The Tokio Marine and Fire Insurance Co., Ltd.	30,538	2.12
The Asahi Shimbun	24,376	1.69
The Dowa Fire and Marine Insurance Co., Ltd.	23,011	1.60
The Sakura Bank, Limited	21,881	1.52
The Bank of Tokyo-Mitsubishi, Ltd.	21,188	1.47
All Nippon Airways Co., Ltd., Employee Stock Ownership Association	20,883	1.45
Tokyu Corporation	20,171	1.40
Kokusai Kogyo Co., Ltd.	19,784	1.37
Total	315,280	21.85

* Nagoya Railroad Co., Ltd., holdings include 27,100 thousand shares registered in other names.

Transfer Agent

The Sumitomo Trust and Banking Co., Ltd.
1-10, Nikko-cho, Fuchu, Tokyo 183-8701, Japan

Auditor

Century Ota Showa & Co.

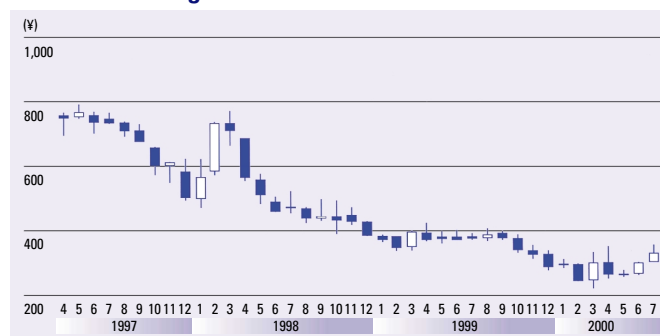
Stock Price and Ratios

Nonconsolidated

	1996	1997	1998	1999	2000
Stock Price* (¥):					
High	1,150	1,200	790	685	422
Low	895	739	468	335	219
PER (times):					
High	537.4	442.8	-	-	-
Low	418.2	272.7	-	-	-
Price/Cash Flow Ratio (times):					
High	23.7	24.3	18.2	16.9	16.6
Low	18.4	14.9	10.8	8.3	8.6
PBR (times):					
High	8.7	9.1	6.2	5.6	3.6
Low	6.8	5.6	3.7	2.7	1.9
Net Income (Loss) per Share (¥)					
	2.14	2.71	(1.85)	(4.57)	(6.75)
Equity per Share (¥)					
	132.5	132.2	127.4	122.8	117.5

* Tokyo Stock Exchange

Stock Price Range



Trading Volume

